

STAR Reefers

Q2 Report 2007

6 September 2007



Recent Reefer Industry Developments

- ★ 12 mnth charters for modern tonnage agreed end 2006 were up 4% (Orion Shipping)
- ★ Spot rates for larger vessels in 1st half 2007 up 49% on 2006
- ★ High season spot rates were down 6 % on 2006
- ★ Traditional spot charterer secures tonnage longer term
- ★ Tariff of EUR 176/tonne + 775 K duty free for ACP effective 1 Jan 06
- ★ EU banana volumes and prices sideways 1st Half 2007 (2006: volumes +12% selling prices – 10-20%)
- ★ Competition for quality 2nd hand tonnage continues
- ★ No Scrapping H1. Scrapping 06 > 400,000 cbft: 2.2m cbft
- ★ Continuing high bunker prices
- ★ Ships operating expenses continue to outpace inflation
- ★ Continuing competition from containers

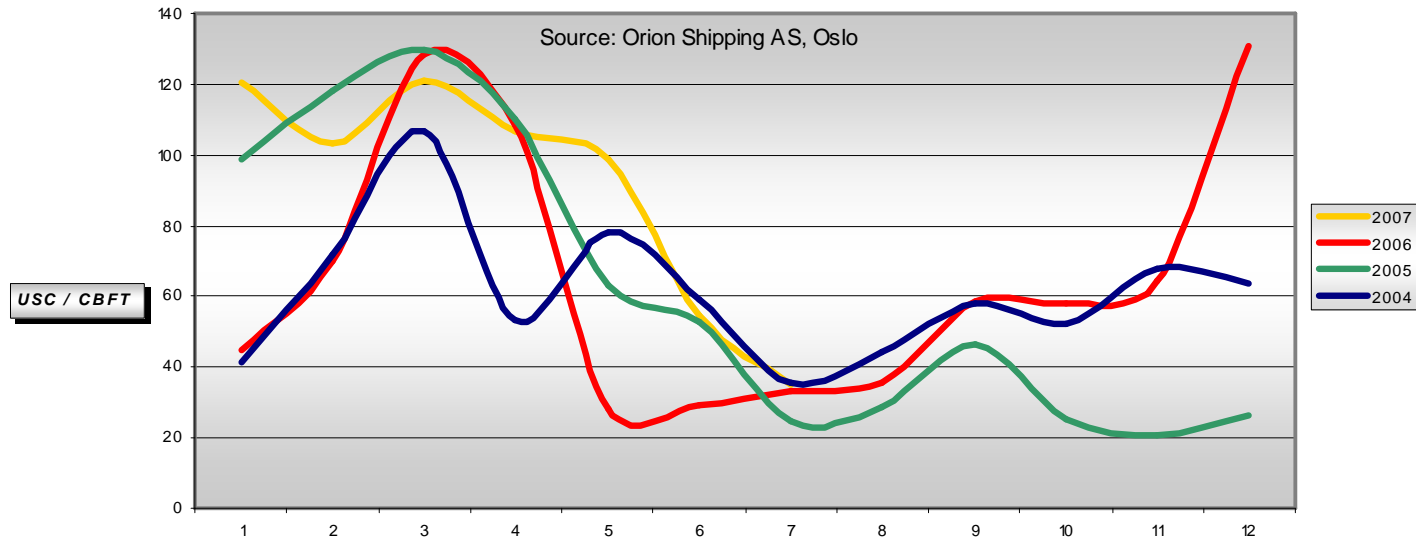
Q2 - 2007

slide no. 2



Spot Rates

Timecharter spot rates for larger vessels



Rates for larger vessels in Q2 07 up 56% on Q2 2006

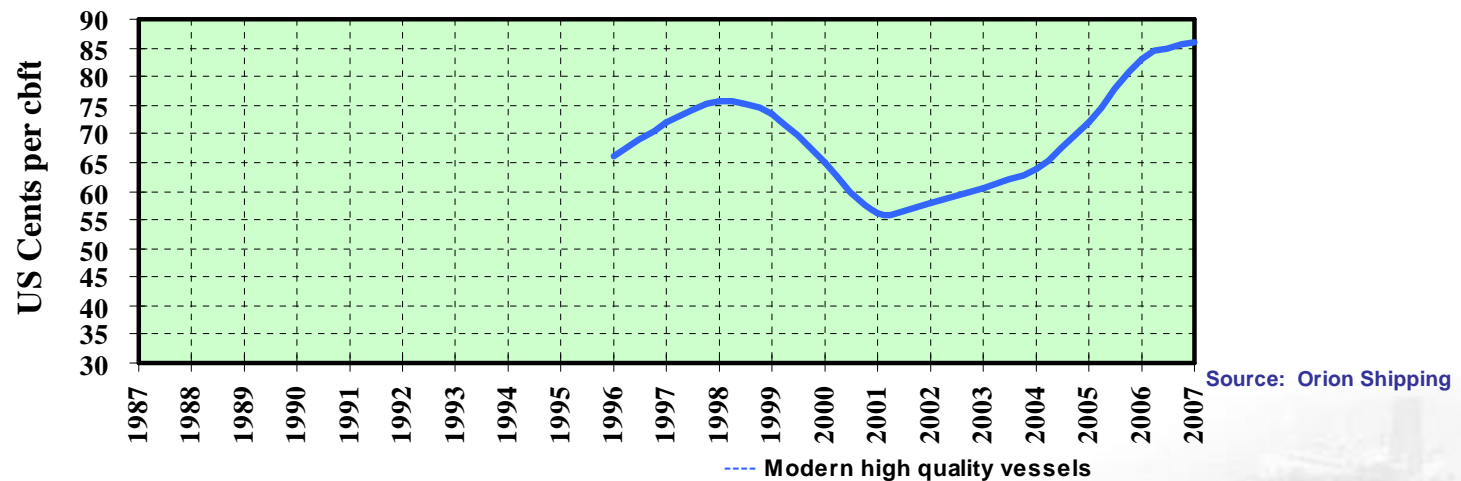
Q2 - 2007

slide no. 3



12 Month Rates for Larger Modern Vessels

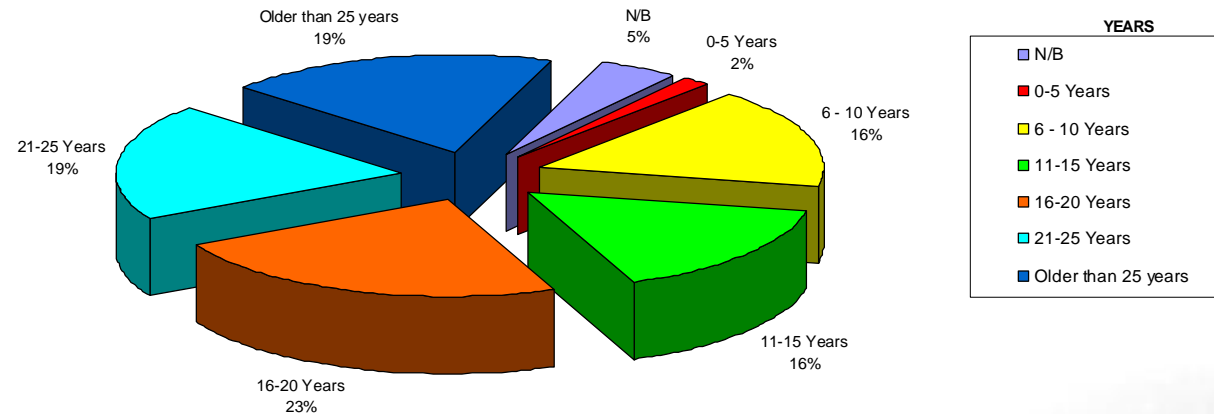
REEFER 12 MONTHS ESTIMATED EARNINGS
Size: Larger vessels



12 Month Rates 2007: up 4% for modern vessels

Worldwide Reefer Fleet over 400,000 cbft. Age Distribution

REEFER FLEET EXCESS 400.000 CBFT - AGE DISTRIBUTION BY CBFT
(Source: Orion Shipping AS)



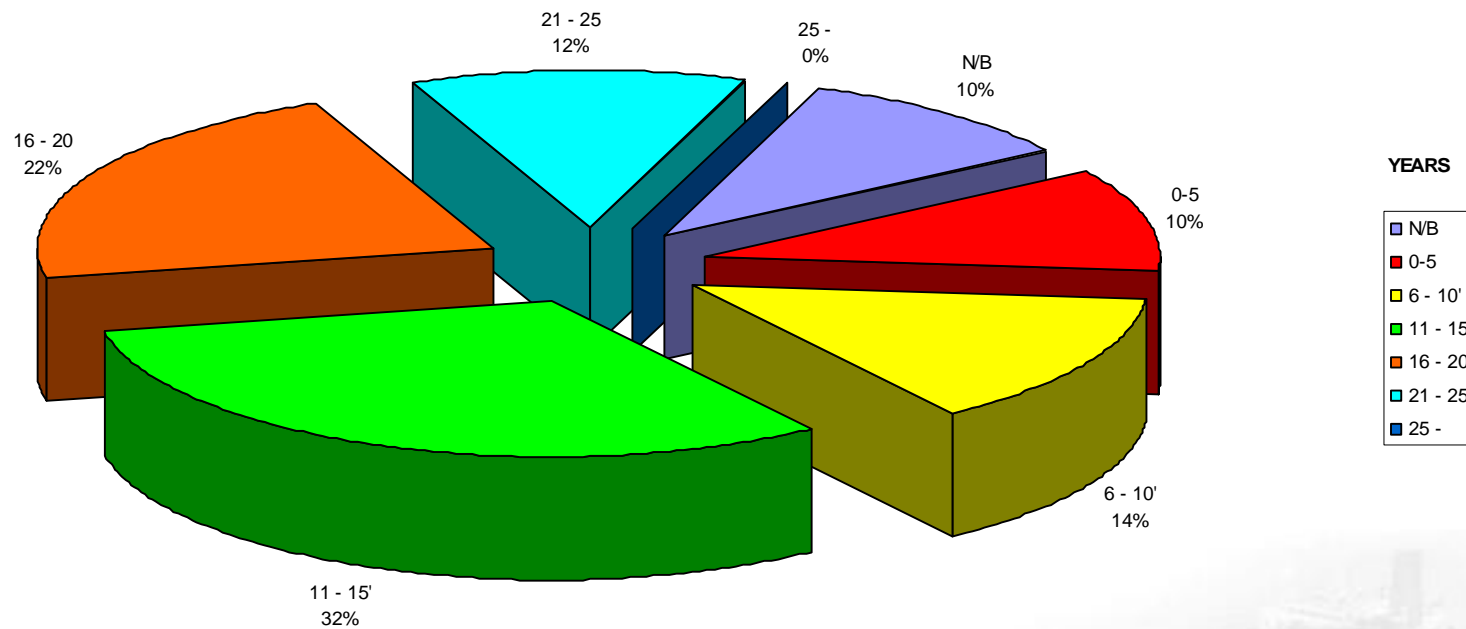
**Fleet > 400.000 cbft: 314 vessels and 164m cbft.
38% <less than 15 years old**

Q2 - 2007

slide no. 5



STAR Reefers Fleet 2007 Age Distribution



**44 vessels - 23.7m cbft -av. age 12 years Newbuildings at 0 years.
66% less than 15 yrs old**

Q2 - 2007

slide no. 6



STAR Fleet

	# of Ships	Capacity (mill cbft)	Average Age	Average Size 1 000 cbft
Owned	27	13.7	16	508
Bare Boat Charter (with purchase options)	3	1.6	14	519
Time Charter (incl. newbuilds) *	14	8.4	5	602
Total Fleet	44	23.7	12	538

* Delivery of 2nd series of 4 newbuilds 2008 - 2010. Age of newbuilds set at 0 years

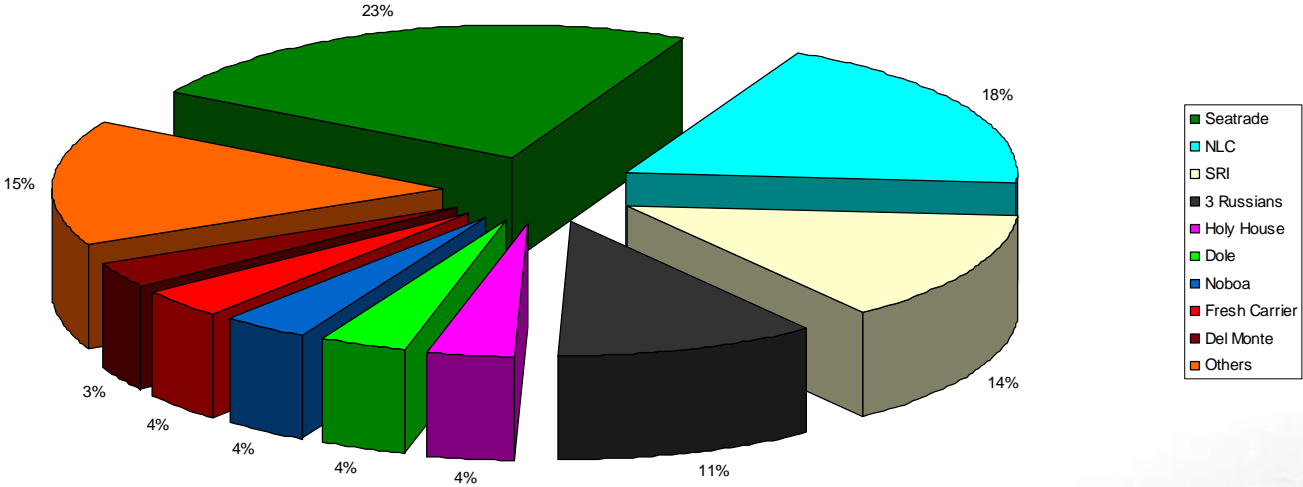
Q2 - 2007

slide no. 7



Worldwide Reefer Fleet over 400,000 cbft. Breakdown by Owner/Operator

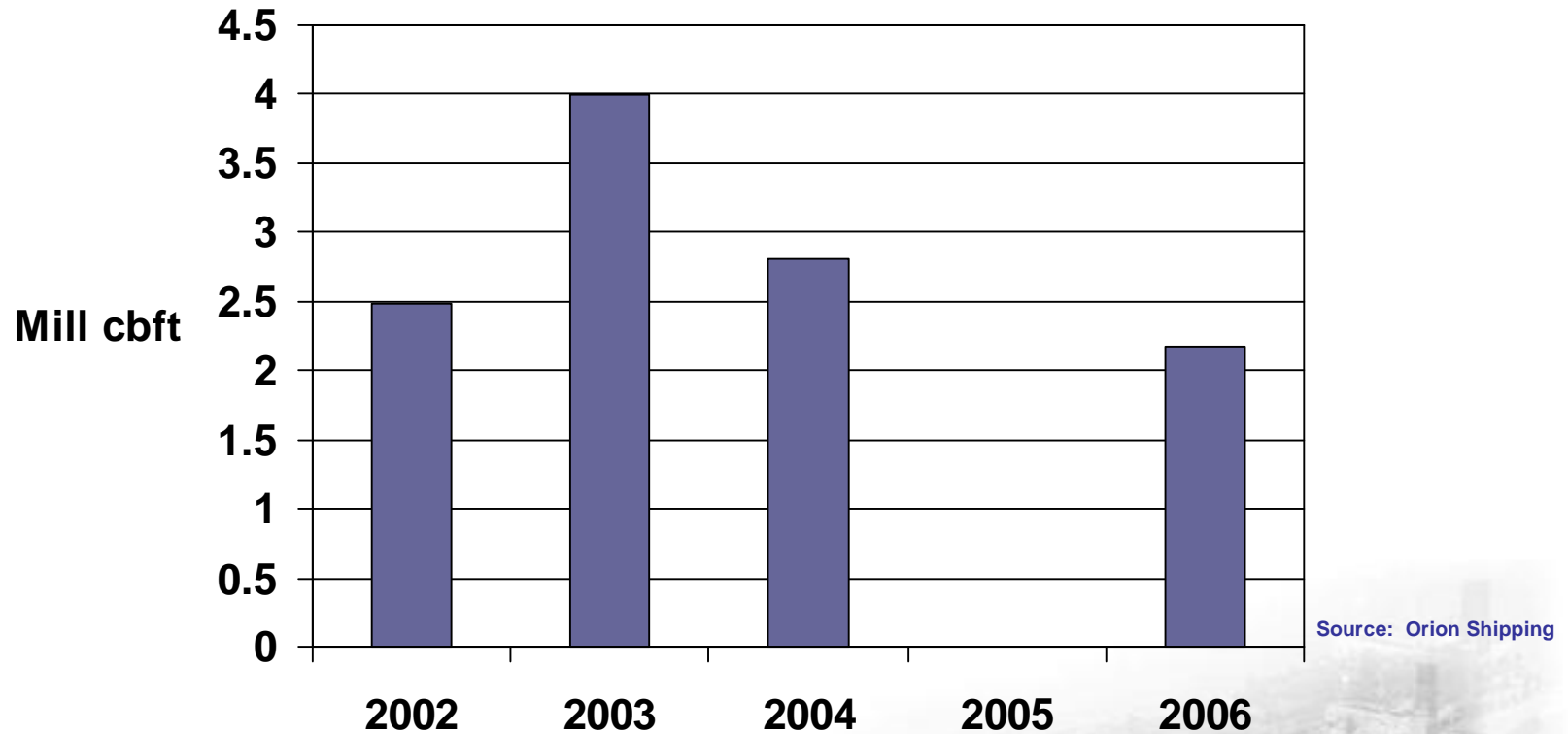
REEFER FLEET EXCESS 400.000 CBFT - NOS. DISTRIBUTION BY OWNERS/OPERATORS
(Source: Orion Shipping AS)



STAR controls 14% of fleet > 400.000 cbft



Scrapping Reefer Vessels over 400,000 cbft.



4 vessels representing 2.2m cbft scrapped 2006

STAR Reefers Highlights Q2 2007

- ★ Net income of USD 12.8 million (USD 11.2 million)
- ★ EPS USD 1.46 (USD 1.28)
- ★ EBITDA of USD 17.3 million (USD 16.4 million)
- ★ Capacity increased to 61.1 million cbft. (57.5 million cbft.)
- ★ *STAR Stratos*, was delivered May 29th
- ★ Continuing growth of STAR's ship management operation in Poland
- ★ Repayment of USD19.8 million

Q2 - 2007

slide no. 10

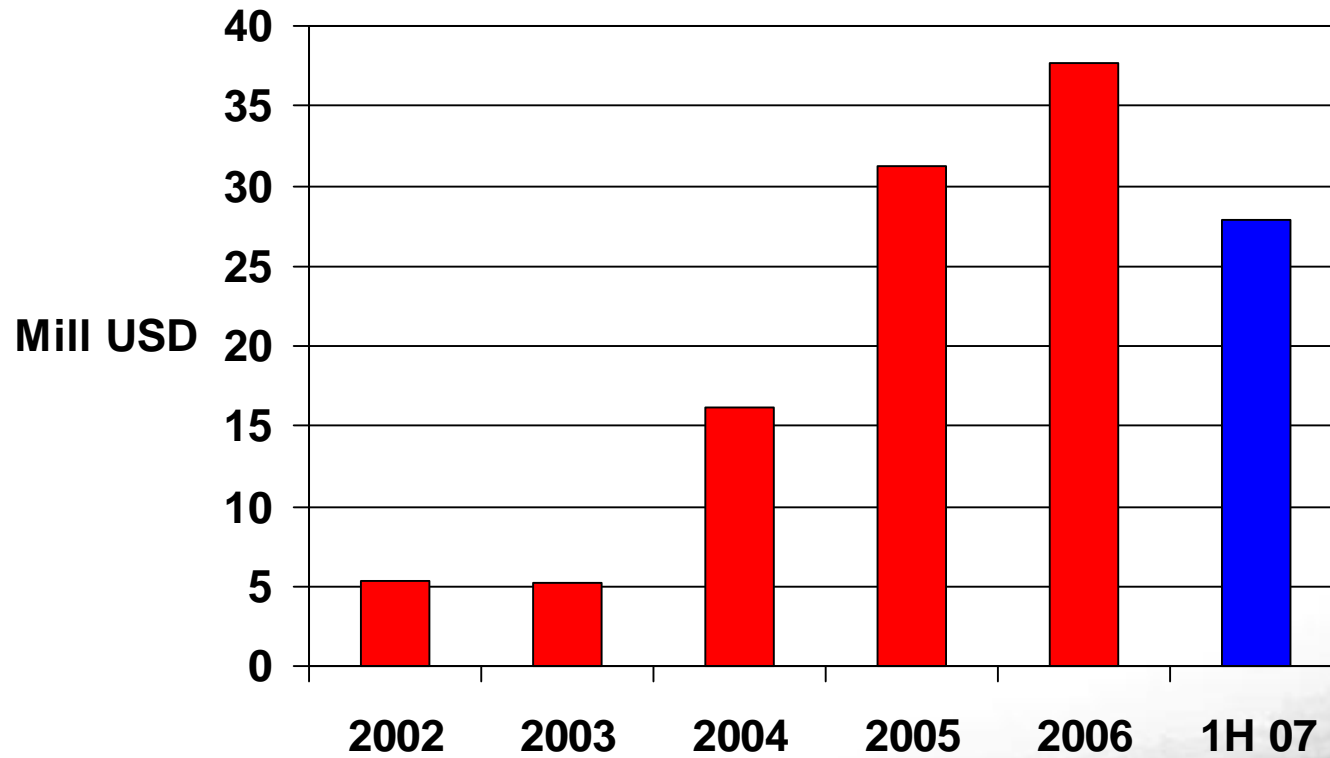


8 Newbuildings

- ★ Vessels being built at Shikoku Yard for Japanese owner
- ★ Specialised reefers of approx. 615,000 cbft.+ 200 FEU containers
 - ★ High speed
 - ★ Low bunker consumption
- ★ 10 year duration of charters
- ★ First series of 4 vessels
 - ★ *STAR First*, *STAR Prima*, delivered 2006
 - ★ *STAR Stratos* and *STAR Best* delivered 1st half 2007
- ★ Second series of 4 vessels contracted March 2007
 - ★ To be delivered between early 2008 and early 2010

STAR Reefers is committed to the reefer market long-term

Net Income



Positive development over past five years

Q2 - 2007

slide no. 12



Profit & Loss Account

	Q2 2007	Q2 2006	2006
Net operating revenues	\$ 49.9	\$ 44.3	\$ 171.7
Ships OPEX & admin.cost	-20.7	-17.5	-72.2
Time charter hire	-10.7	-7.5	-29.6
EBITDAR	18.5	19.3	69.9
Bare boat charter hire	-1.2	-2.8	-10.9
Depr. and amortization	-3.6	-3.4	-13.6
Operating profit	13.7	13.1	45.4
Interest expense	-1.9	-2.2	-8.4
Other financial items	1.0	0.4	0.6
Taxes		-0.1	0.1
Net income	\$ 12.8	\$ 11.2	\$ 37.7
EPS	\$ 1.46	\$ 1.28	\$ 4.32

Q2 - 2007

slide no. 13



Balance Sheet

	<u>30-Jun-07</u>	<u>30-Jun-06</u>	<u>31-Dec-06</u>
Assets			
Vessels	\$ 281.8	\$ 267.7	\$ 289.3
Other fixed assets	1.4	2.3	1.6
Other current assets	23.7	21.0	17.8
Bank deposits	33.3	29.5	11.2
Total assets	<u><u>\$ 340.2</u></u>	<u><u>\$ 320.5</u></u>	<u><u>\$ 319.8</u></u>
Equity	<u><u>\$ 186.9</u></u>	<u><u>\$ 144.2</u></u>	<u><u>\$ 159.0</u></u>
Interest bearing debt	115.6	142.7	135.9
Short term liabilities	37.7	33.6	24.9
Total equity and liabilities	<u><u>\$ 340.2</u></u>	<u><u>\$ 320.5</u></u>	<u><u>\$ 319.8</u></u>
Equity ratio	55%	45%	50%
Equity per share	\$21.34	\$16.55	\$18.16

Star Reefers Shareholders

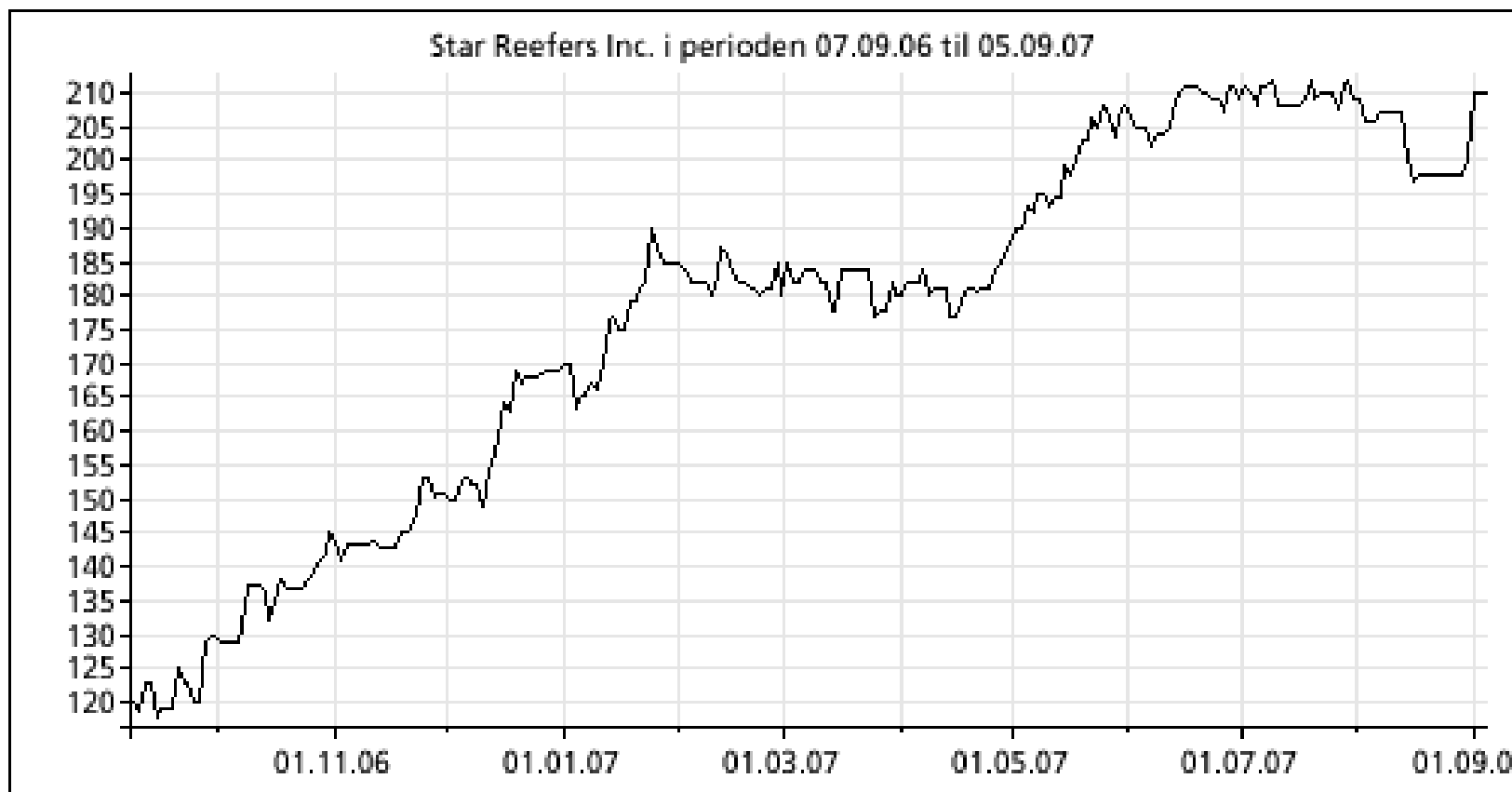
	# of shares	% of shares
Sep-07		
Siem Industries	6,272,534	71.6%
Caiano Ship + K Eidesvik	665,299	7.6%
Seatrade Invest N.V	440,000	5.0%
Verdipapirfondet Odin	188,250	2.1%
Actinor Shipping	170,650	1.9%
Skagen Vekst	171,500	2.0%
Belleza Capital Group	137,700	1.6%
NSV Invest	125,000	1.4%
Other	585,886	6.7%
Total	8,756,819	100.0%

Q2 - 2007

slide no. 15



Share Price STAR Reefers Past 12 Months



Q2 - 2007

slide no. 16

